

DOLPHIN

By Mike Kirkhart



LIFETONE®

PAINTING INSTRUCTIONS

1. #100 BASECOAT SEALER—Spray 1 heavy coat on fish.
2. #971 SILVER METALLIC—Paint entire fish except inside of mouth.
3. #702 PURE WHITE—Spray inside mouth, throat area under gill plate, and lower jaw. The belly should be sprayed with a stippled, overspray effect down to peduncle area. (Figure 1)
4. #975 CHROME PEARLESCENT—Spray over the general body below the lateral line to fuse the silver and white. Spray gill cover and lower jaw. Spray tail, ventral fin, and pectoral fins.
5. #301 BRIGHT YELLOW—Spray tail, body, head, and lower fins. Vary the intensity from the bright yellow on the tail, fading lighter as you work forward to the head. Allow the underlying pearl to create a blotchy iridescent effect.
6. #454 NEON GREEN—Spray along the back above the lateral line, and down to the yellow on the side of the body. Spray entire dorsal fin.
7. #971 SILVER METALLIC—This color is used as an underlayer for the Ocean Blue to be applied in step #9. It will make the blue appear bolder, so keep this in mind while spraying. Mist front of head, along back, edges of fins, back of pectoral fins, and along lateral line. (Figure 2)

MARKING BLUE—Mix one volume #702 Pure White with 2 volumes #501 Ocean Blue. This color is applied by blotting,

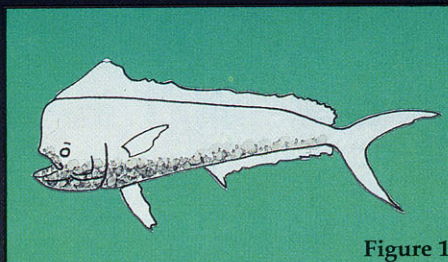


Figure 1

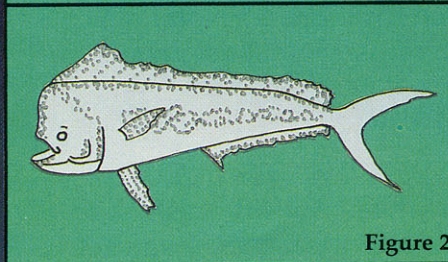


Figure 2

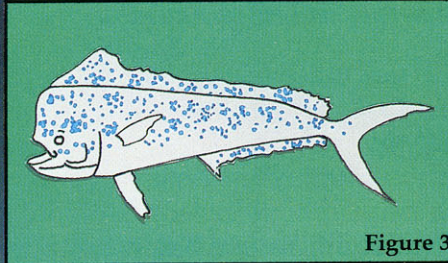


Figure 3

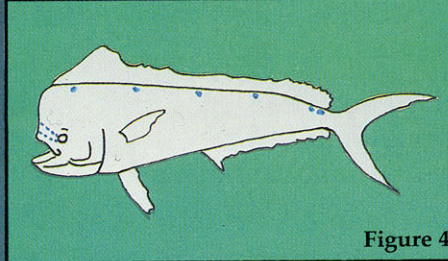


Figure 4

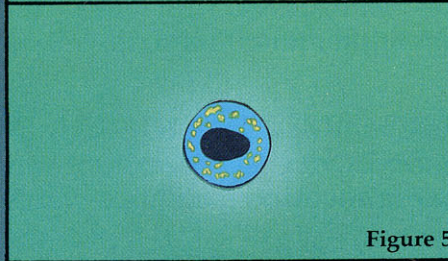


Figure 5

dripping, and hand painting with an artist's brush. Apply over entire body, gill covers, head area, and ventral and dorsal fins. Irregular shapes, sizes, and groupings look most natural. (Figure 3)

9. #501 OCEAN BLUE—Spray from a variety of angles to allow the silver from step #7, and the spots from step #8, to pick up the overspray. The edges of fins, back of pectoral fins, top of back, and front of head are more intensely colored than other areas. The jaw, gill plate, mouth, and eye areas are carefully detailed close-up.

10. MARKING BLUE—Use the light blue mixture from step #8 to spray 5 or 6 small round spots on top of the fish's back. Also spray the markings in front of the eye. For a different effect, the spots in front of the eye could be applied before step #9. (Figure 4)

11. #702 PURE WHITE—Use to clean up any overspray inside mouth, on teeth, jaw, gill tissues, and belly. Mist edges of dorsal and ventral peduncle tips.

12. #102 NATURAL FLESH—Sparingly spray or brush the gripping teeth and gill rakers only. The rest of the mouth interior is very white.

13. #101 GILL RED—Spray or brush gills.

14. LIQUID CRYSTAL™—After you are satisfied with your color work, spray entire fish. To avoid runs, allow 5 to 10 minutes between coats.

NOTE: The back of the eye is first sprayed with #501 Ocean Blue. Some areas around the pupil are then dabbed away by an artist's brush moistened with lacquer thinner. #301 Bright Yellow is brushed into the areas from where the blue was removed. Allow to dry before spraying entire back with #971 Silver Metallic. (Figure 5)

CHEM Oddities, Inc.

P.O. BOX 5125 ST. LOUIS, MISSOURI 63139