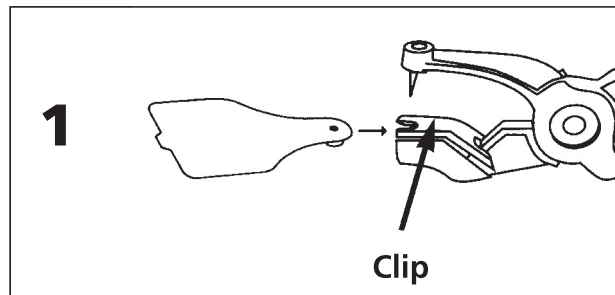


## TAXIDERMY HIDE TAG APPLICATION INSTRUCTIONS

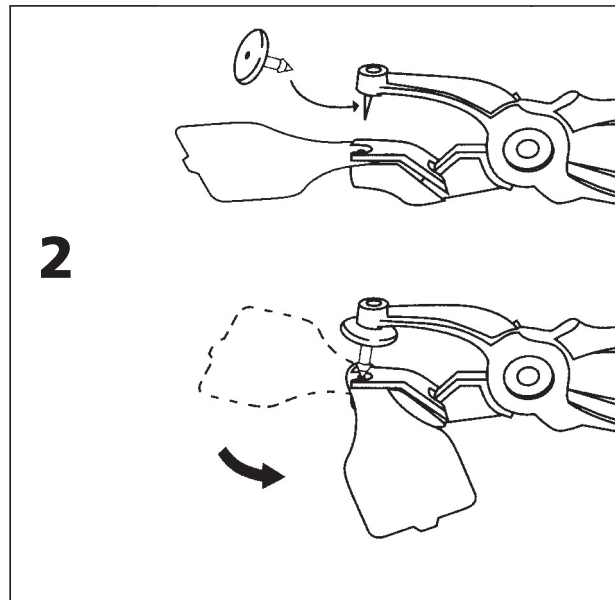
*Taxidermy hide tags are a convenient thing to have around the shop. If you're tired of trying to read the punches in your capes when they come back from the tannery, these tags are what you need. Use a Pilot Permanent Marker to write work order numbers or customer names on these handy tags. Then simply attach to cape wherever you please! Writing will not come off in an acid or tanning bath! Easy, and no worries, with one quick look you'll be able to identify your customers cape!*

### SIMPLE APPLICATION:

- 1) Insert the female panel between spring clip and jaw base. Push all the way into position (important for proper alignment).



- 2) Be sure that the stud is well seated up into the applicator pin. (Press firmly). Improper seating may cause tip breakage. NOTE: Female panel can be rotated to either side, as shown, for easier alignment and insertion. Apply hide tag to any part of hide and label as desired.



## RESEARCH MANNIKINS

1-800-826-0654 • (541) 451-1538 OFFICE • (541) 451-5455 FAX

*"Your Hometown Taxidermy Supply Store"*